



# Water Service Line Test Process

Tools needed for test:

- ❖ Flathead Screwdriver
- ❖ Refrigerator Magnet
- ❖ Penny

## Step 1:

### **Locate the water service line coming into the building.**

An "inlet valve" and the water meter are installed on the pipe after the point of entry.

If your service line is made of plastic there is no need to conduct this test.

The location of the incoming water service of your home will depend on the homes construction.

- If your home has a basement the incoming water service line is most commonly found coming out of the wall or floor.
- If your home does not have a basement but has a crawlspace the water service line entry can usually be found on the floor of the crawlspace.
- If your home is constructed on a slab the water service should be located on the main floor in a utility closet.

Once the water service line of your home is located make sure to identify the area of the test. See Page 3 of this document for pictures of the testing location.

*(Note: If the pipe may be covered or wrapped. Only expose enough metal needed to conduct the test.)*

## Step 2:

### **Scratch the surface of the pipe.**

Use the flat edge of a screwdriver to scratch through any corrosion that may have built up on the outside of the pipe.

**DO NOT** use a knife or other sharp instrument.

## Step 3:

### **Compare your findings to the illustrations below**

Each type of pipe material will produce a different type of scratch, react to the magnet differently, and produce a unique sound when tapped with a penny. The pages below include more detailed explanations of the characteristics of each pipe.

- ❖ Page 4 Includes Examples of Lead Pipe
- ❖ Page 5 Includes Examples of Copper Pipe
- ❖ Page 6 Includes Examples of Galvanized Pipe



# Lead Pipe



## Scratch Test:

If the scraped area is shiny and silver, your service is lead.  
(Note: always make sure to wash your hands with cold water after handling any lead.)

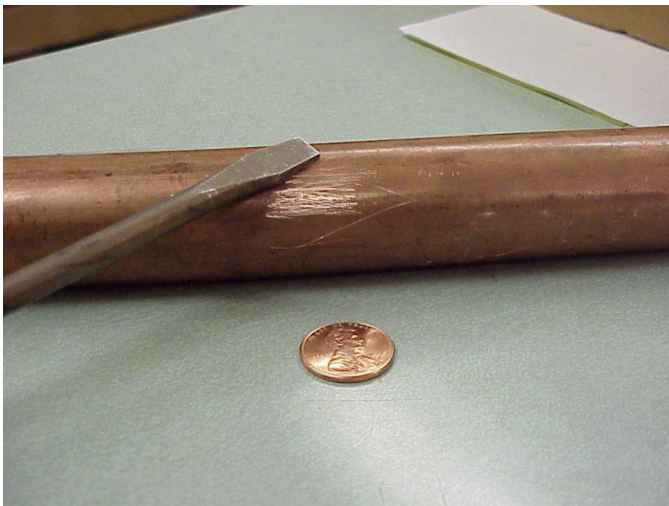
## Magnet Test:

A magnet will NOT stick to a lead pipe.

## Tapping Test:

Tapping a lead pipe with a penny will produce a "dull" noise.

# Copper Pipe:



## Scratch Test:

If the scraped area is copper in color (like a penny) your service line is copper.

## Magnet Test:

A magnet will NOT stick to a copper pipe.

## Tapping Test:

Tapping a copper pipe with a penny will produce a metallic ringing noise.

# Galvanized Pipe



Scratch Test: If the scraped area remains a dull gray, your service line is galvanized steel.

Magnet Test: A magnet sticks to a galvanized pipe.

Tapping Test: Tapping a galvanized pipe with a penny will produce a metallic ringing noise.

**\*\*IF YOU ARE UNABLE TO DETERMINE THE PIPE MATERIAL PLEASE CALL 630-834-8505 FOR ASSISTANCE \*\***