



Michigan – Park to Madison

Street Improvement

Plan

05/29/14

Street Improvements are a top priority because:

- Improve Villa Park's infrastructure, especially the rideability of Village streets
- Increase Villa Park safety through improved roads for residents and visitors alike
- Enhance the curb appeal of our residents' most important investment – their homes!
- Make Villa Park more attractive to businesses and their clients and customers

Background

- Villa Park has 74 center line miles of streets
- Estimated asset value – \$97.7 million
 - Asphalt Pavement
 - Concrete Pavement
 - Asphalt over Concrete
- Recommended maintenance
 - \$2.3 million annual resurfacing
 - 14 year cycle

How does the Village pay for street maintenance?

- The current 0.5% sales tax provides about \$1.4 million annually
- Grants – high traffic volume streets
- Motor fuel taxes – matching funds for grants
- Sales tax funds pay for maintenance activities and resurfacing or reconstruction but not both

What does street reconstruction cost?

- Reconstruction cost
 - \$1.7 to \$1.9 million per mile road only costs
 - North Michigan: \$1,002,954 (1,800 feet)
 - \$2.94 million/mile total cost
 - Van Buren: \$917,445 (815 feet)
 - \$5.94 million/mile total cost

What does street resurfacing cost?

- Resurfacing costs
 - \$350,000 to 450,000 per mile
 - Kenilworth: \$458,000
 - Harvard/Washington: \$410,000
- 25.5 miles completed in last 7 years
 - 3.8 miles resurfaced in 2013
 - 0.5 miles resurfacing proposed in 2014
 - 3.4 miles patching proposed in 2014

Current Roadway Maintenance

- Maintenance activities
 - Crack Seal (joint bid)
 - Asphalt Rejuvenation
 - Patching (joint bid and in-house)
 - Grind and resurface (joint bid)
- Rehabilitation activities (capital improvements)
 - Pavement reconstruction
 - Curb and gutter replacement
 - Drainage improvements
 - Underground utilities
 - Parkway landscaping and signage

Have the Village streets been evaluated?

- Yes
- Pavement Evaluation completed 2013
 - Surface laser testing
 - Deflection testing
- Pavement data analysis
 - Pre-winter pavement condition was 76.5 (100 scale)
 - Pavement improved from 67 during the past 20 years

Pavement rehabilitation strategies:

- Worst first approach - \$40 million (not recommended)
- Blended approach (recommended)
 - Maintain condition of good streets (\$750k annually)
 - \$23 million in rehab over seven years
 - Includes most unfunded CIP projects

Pavement Condition

Condition	Rank Number	Street Length	Miles Of Street	% Of Total Miles
Failed	0-9	0	0.0	0.0%
Very Poor	10-39	932	0.2	0.2%
Poor	40-59	40,436	7.7	10.4%
Fair	60-69	58,091	11.0	14.9%
Good	70-79	82,214	15.6	21.1%
Very Good	80-84	69,472	13.2	17.9%
Excellent	85-100	137,980	26.1	35.5%
Grand Total			73.7	100.0%

UNFUNDED ROAD CIP

STREET	FROM	TO
ASTOR CT	SUMMIT AV	MYRTLE AV
CONCRETE STREETS	VARIOUS	
MAPLE ST	SUMMIT AV	VILLA AV
MICHIGAN AV	PARK BV	MADISON AV
MICHIGAN AV	MADISON AV	JACKSON ST
MYRTLE AV	MADISON AV	TERRY LN
MYRTLE AV	PARK BV	HIGHLAND AV
OAK ST	DIVISION ST	VILLA AV
PARK BLD	VILLA	EAST END
PINE ST	SUMMIT AV	VILLA AV
SUMMIT AV	MAPLE ST	DIVISION ST
WISCONSIN	JACKSON	MADISON
YALE AV	MADISON AV	JACKSON ST



Astor Ct. – Summit to Myrtle



Yale – Madison to Jackson

Grant Funding

- Since 2000, the Village has obtained \$19.2 million in grants and loans for 24 projects
- Generally only higher-volume arterial and collector streets are eligible for grant funding
- Village funds 100% for lower traffic volume streets

Village Board evaluates financing options

- How do we pay for our road projects?
- The cost of reconstruction projects makes it cost prohibitive to fund from the Corporate Budget
- Current sales tax revenue insufficient for major road repairs
- Considering a referendum to issue bonds

Village Board evaluates financing options (cont)

- Vehicle Roadway Usage Fee
- Increase non-home rule sales tax
 - Increase sales tax by 0.50%
 - Would generate \$1.4 million annually
 - Would require voter approval
- Continue to pursue grants

Bond Implementation

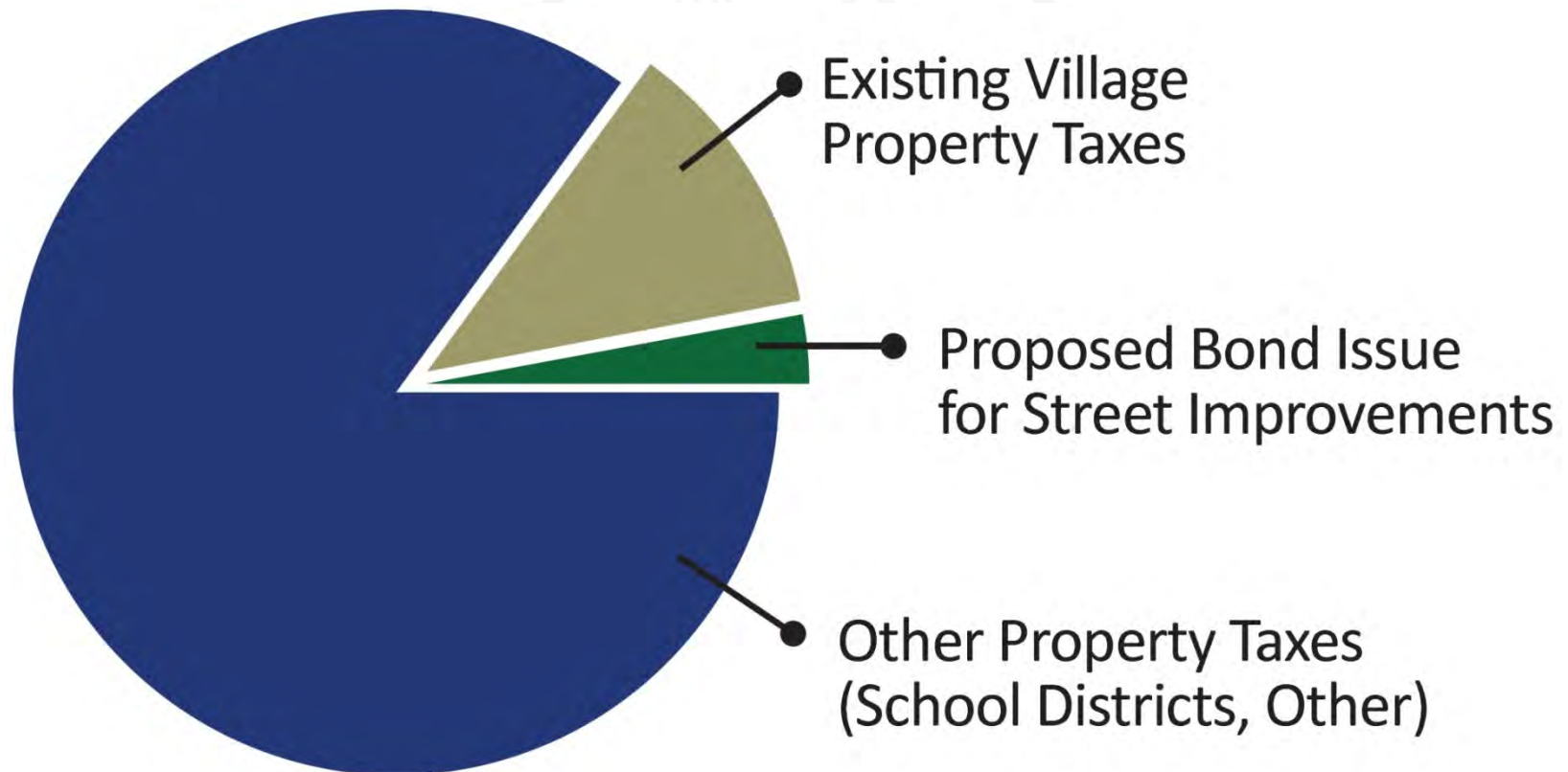
- \$23 million over seven years
 - Initial focus on shovel ready projects and resurfacing
 - Design of reconstruction projects (4 – 10 months)
 - Coordination with water, sewer, sewer separation, and drainage projects
- The Village has engineering partially completed for two unfunded reconstruction projects:
 - Park Boulevard from Villa to east end (75%)
 - Michigan from Park to Madison (10%)

Summary of Proposed Improvements

STRATEGY TYPE	TOTALS	
	MILES	COST
- Reconstruct	9.81	\$16,419,186
- Rehabilitation	3.81	\$3,924,701
- Mill & Resurface (Heavy)	3.23	\$1,735,869
- Mill & Resurface	3.01	\$1,183,913
TOTALS	19.86	\$23,263,669

What is the estimated tax impact of the proposed bond issue?

The estimated monthly tax impact of the proposed \$23 million bond measure is \$6.10 per month per \$100,000 of a home's actual market value based on a 20-year-bond issue.





Park Blvd. – Villa to East End



Park Blvd. – Villa to East End



Michigan – Park to Madison



Michigan – Park to Madison



Michigan – Park to Madison



Michigan – St. Charles to Division (Before)



05/29/2014 08:51

Michigan – St. Charles to Division (After)



Michigan – St. Charles to Division (After)



Michigan – St. Charles to Division (After)



Van Buren – Ardmore to Cornell



Van Buren – Ardmore to Cornell

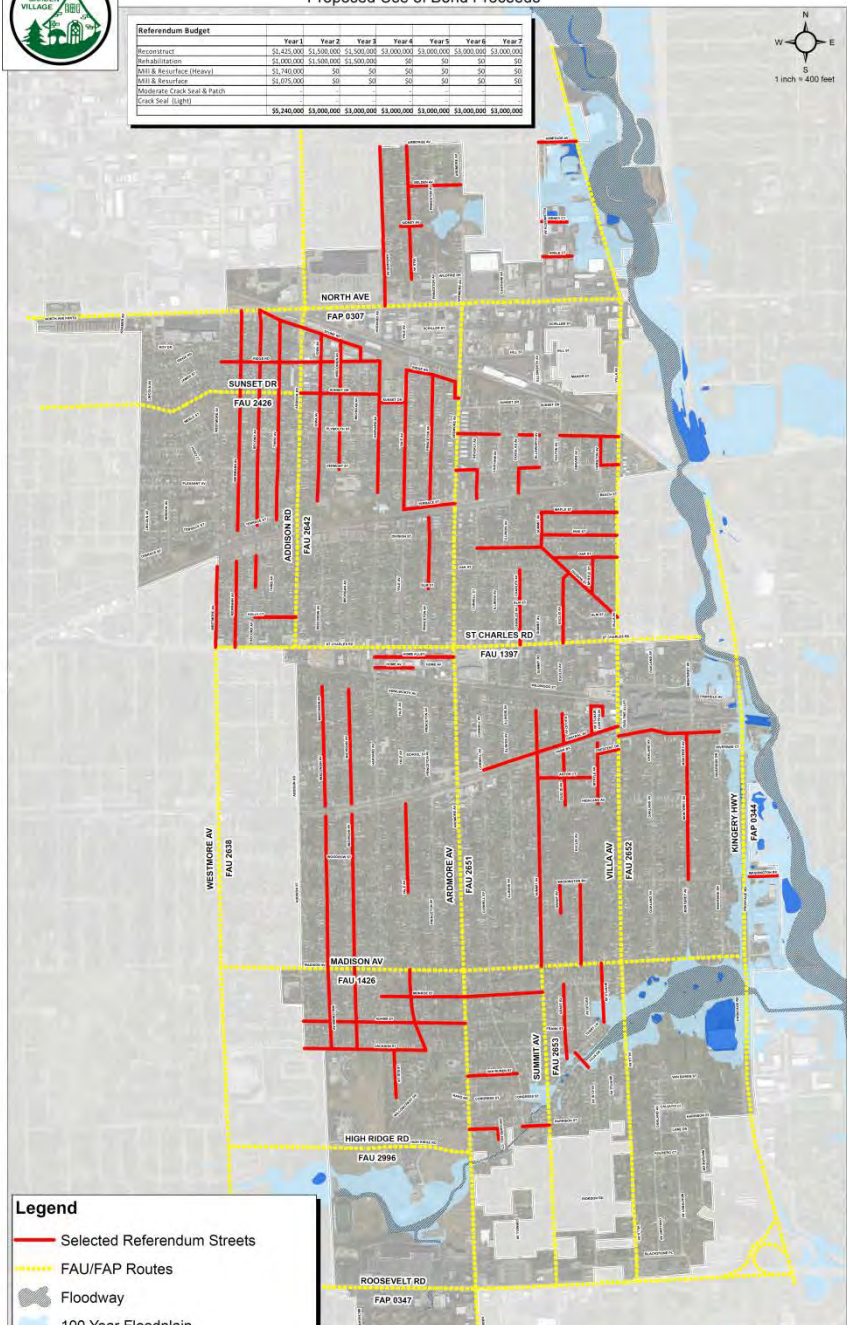


Van Buren – Ardmore to Cornell



Village of Villa Park Referendum Program Proposed Use of Bond Proceeds

Referendum Budget	Year 1	Year 2	Year 3	Year 4	Year 5	Year 6	Year 7
Reconstruct	\$1,425,000	\$1,200,000	\$1,200,000	\$3,000,000	\$3,000,000	\$3,000,000	\$3,000,000
Rehabilitation	\$1,000,000	\$1,000,000	\$1,000,000	\$0	\$0	\$0	\$0
Maint & Resurfacing (Priority)	\$1,750,000	\$0	\$0	\$0	\$0	\$0	\$0
Maint & Resurfacing	\$1,075,000	\$0	\$0	\$0	\$0	\$0	\$0
Moderate Crack Seal & Patch	\$0	\$0	\$0	\$0	\$0	\$0	\$0
Crack Seal (Light)	\$0	\$0	\$0	\$0	\$0	\$0	\$0
Total	\$5,240,000	\$3,000,000	\$3,000,000	\$3,000,000	\$3,000,000	\$3,000,000	\$3,000,000



Legend

- Selected Referendum Streets
- - - FAU/FAP Routes
- Floodway
- 100 Year Floodplain
- 500 Year Floodplain

Revised: 05/15/2014



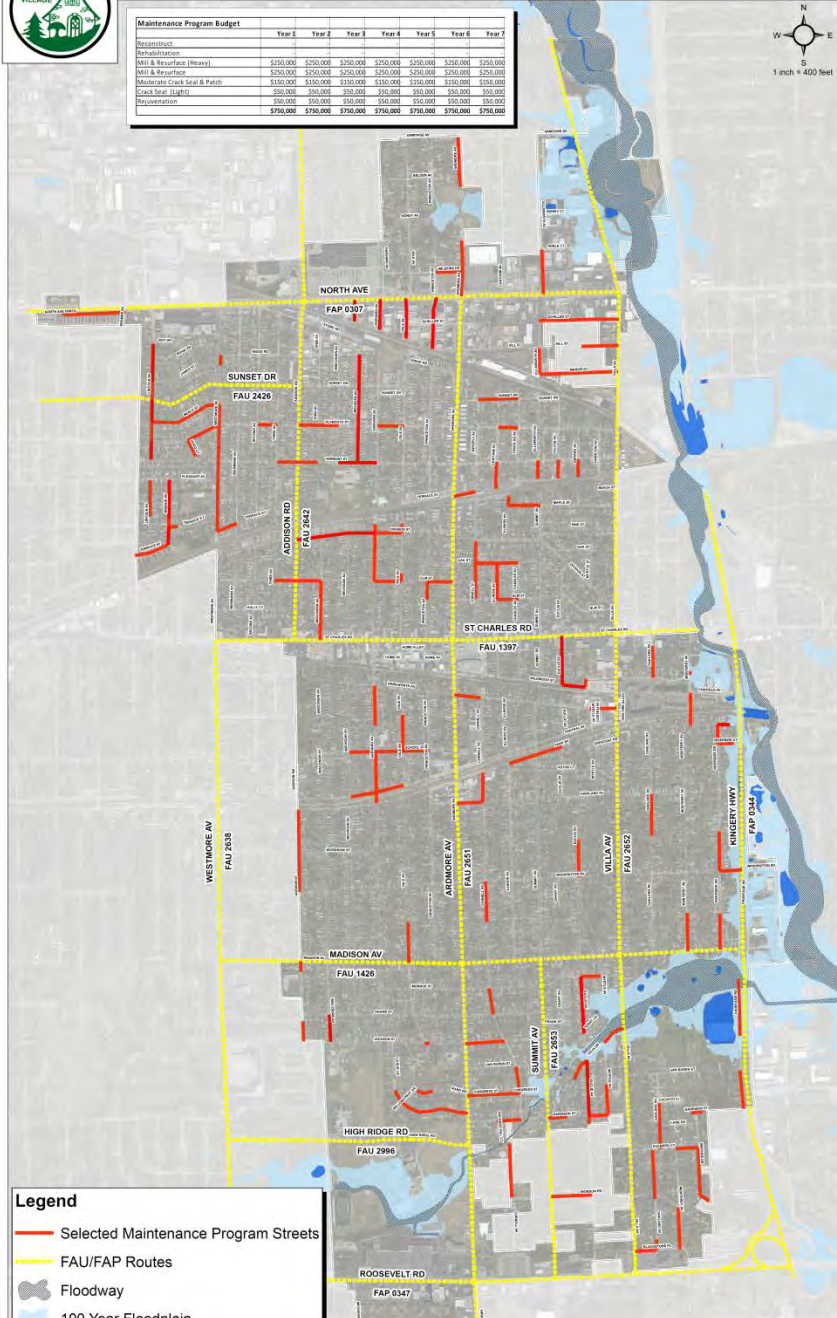
Annual Maintenance Program

- \$750,000 annual maintenance (existing revenue)
 - Crack sealing
 - Asphalt Rejuvenation
 - Patching
 - Grind and overlay
- All money generated will be spent on infrastructure
- If we get favorable prices more roads can be rehabilitated!



Village of Villa Park 2015-2021 Maintenance Program

Maintenance Program Budget	Year 1	Year 2	Year 3	Year 4	Year 5	Year 6	Year 7
Reconstruction							
Rehabilitation	\$250,000	\$250,000	\$250,000	\$250,000	\$250,000	\$250,000	\$250,000
MMI & Resurfacing (Inlays)	\$250,000	\$250,000	\$250,000	\$250,000	\$250,000	\$250,000	\$250,000
MMI & Resurfacing	\$250,000	\$250,000	\$250,000	\$250,000	\$250,000	\$250,000	\$250,000
Moderate Crack Seal & Patch	\$150,000	\$150,000	\$150,000	\$150,000	\$150,000	\$150,000	\$150,000
Crack Seal (Light)	\$50,000	\$50,000	\$50,000	\$50,000	\$50,000	\$50,000	\$50,000
Preventative	\$50,000	\$50,000	\$50,000	\$50,000	\$50,000	\$50,000	\$50,000
Total	\$750,000	\$750,000	\$750,000	\$750,000	\$750,000	\$750,000	\$750,000



Legend

- Selected Maintenance Program Streets
- - - FAU/FAP Routes
- Floodway
- 100 Year Floodplain
- 500 Year Floodplain

Revised: 04/29/2014



Questions?



**Thank you for taking the
time to learn more about the
Village of Villa Park's
proposed street
improvement plan!**

A faint, circular logo is visible in the background. It features a central emblem with a tree and a building, surrounded by the text "THE GARDEN VILLAGE OF VILLA PARK".