
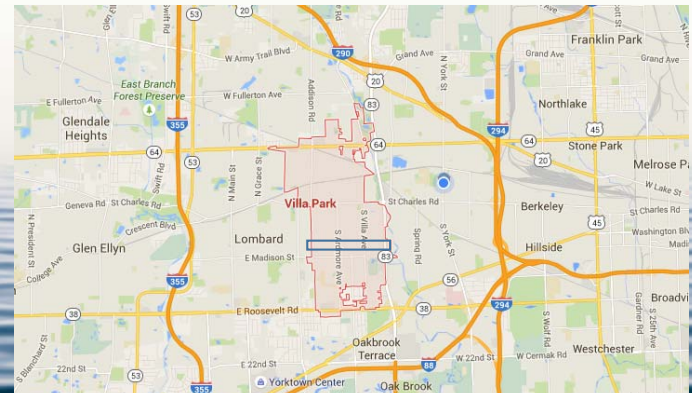



### Salt Creek Stakeholders Luncheon



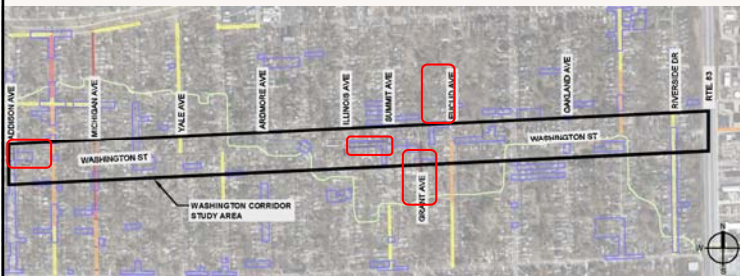
 Conservation Design Forum  
630.559.2000  
[www.cdfinc.com](http://www.cdfinc.com)

### Location Map



 Conservation Design Forum  
630.559.2000  
[www.cdfinc.com](http://www.cdfinc.com)

Salt Creek Stakeholders Luncheon



 Conservation Design Forum  
630.559.2000  
[www.cdfinc.com](http://www.cdfinc.com)

Salt Creek Stakeholders Luncheon

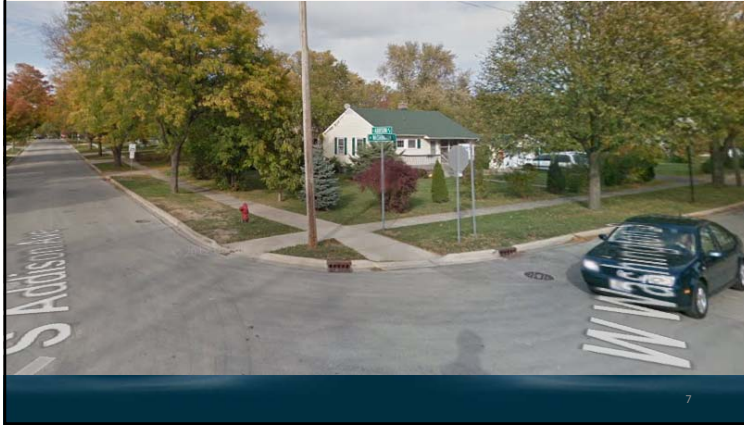
### Project Goals

- Reduce runoff to combined sewer
- Reduce flooding frequency
- Reduce flooding volume
- Improve runoff water quality
- Provide aesthetically pleasing and functional roadways and rights-of-way

 Conservation Design Forum  
630.559.2000  
[www.cdfinc.com](http://www.cdfinc.com)

Salt Creek Stakeholders Luncheon

Field Investigation Photos  
Washington & Addison



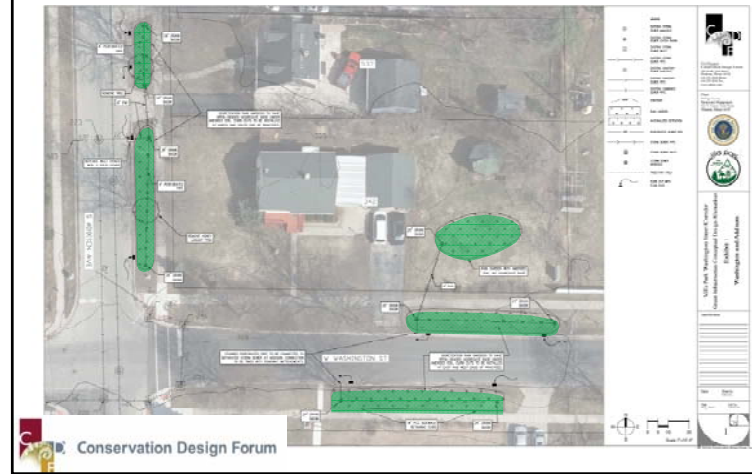
Field Investigation Photos  
Washington & Addison



Field Investigation Photos  
Washington & Addison




Washington and Addison



### Washington and Addison

- Tributary area to project location: 5 acres
- Design features: Bioretention practices and rain garden with native plantings
- Additional benefits: Reduces flooding for adjacent properties while providing water quality improvement
- Level of treatment/protection: Project capable of treating a 1.5-inch rainfall prior to surface water discharge from practices

 Conservation Design Forum  
630.559.2000  
[www.cdfinc.com](http://www.cdfinc.com)

Salt Creek Stakeholders Luncheon

### Green Infrastructure Practices

DuPage County Green Infrastructure Alternatives  
Sidewalk Retaining Curb - Before

 Conservation Design Forum



 Conservation Design Forum  
630.559.2000  
[www.cdfinc.com](http://www.cdfinc.com)

Salt Creek Stakeholders Luncheon

### Green Infrastructure Practices

DuPage County Green Infrastructure Alternatives  
Sidewalk Retaining Curb - Grass

 Conservation Design Forum



 Conservation Design Forum  
630.559.2000  
[www.cdfinc.com](http://www.cdfinc.com)

Salt Creek Stakeholders Luncheon

### Green Infrastructure Practices

DuPage County Green Infrastructure Alternatives  
Sidewalk Retaining Curb - Perennial Plantings

 Conservation Design Forum



 Conservation Design Forum  
630.559.2000  
[www.cdfinc.com](http://www.cdfinc.com)

Salt Creek Stakeholders Luncheon

### Parkway Rain Gardens



 Conservation Design Forum  
630.559.2000  
[www.cdfinc.com](http://www.cdfinc.com)

Salt Creek Stakeholders Luncheon

### Parkway Rain Gardens



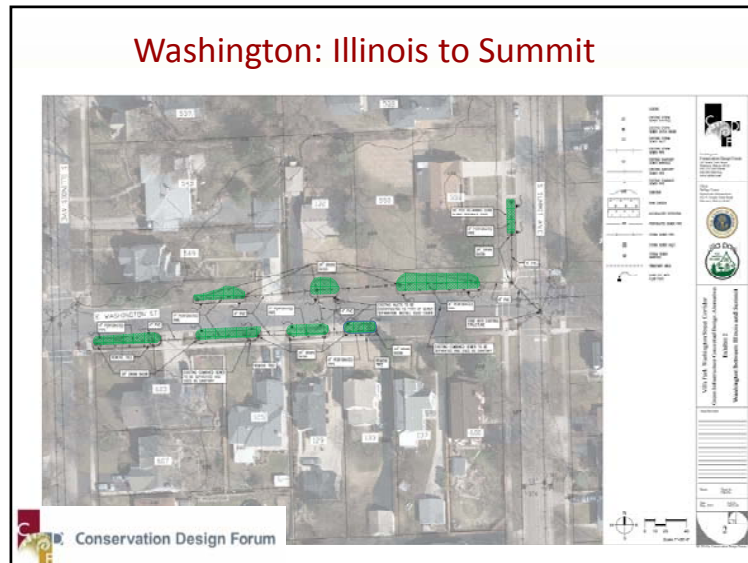
City of Madison Rain Garden Program

### Field Investigation Photos Washington: Illinois to Summit



### Field Investigation Photos Washington: Illinois to Summit





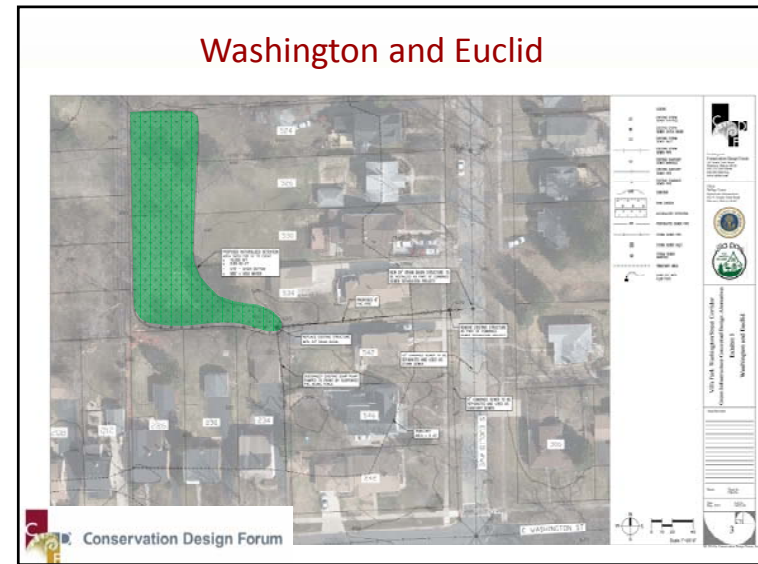
### Washington: Illinois to Summit

- Tributary area to project location: 3.5 acres
- Design features: Bioretention treatment train with native plantings
- Additional benefits: Disconnection of runoff from combined sewer; reduces flooding for adjacent properties while providing water quality improvement
- Level of treatment/protection: Project capable of treating a 2-inch rainfall prior to surface water discharge to storm system

Conservation Design Forum  
630.559.2000  
[www.cdfinc.com](http://www.cdfinc.com)

Salt Creek Stakeholders Luncheon



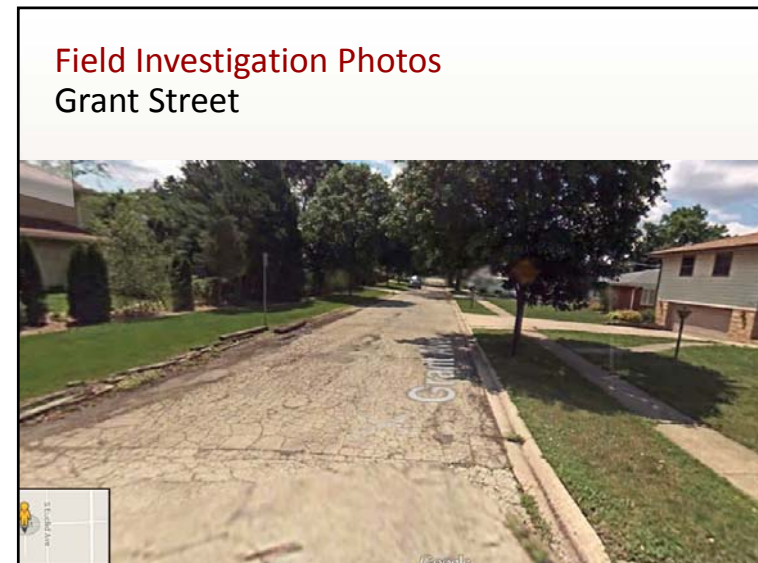


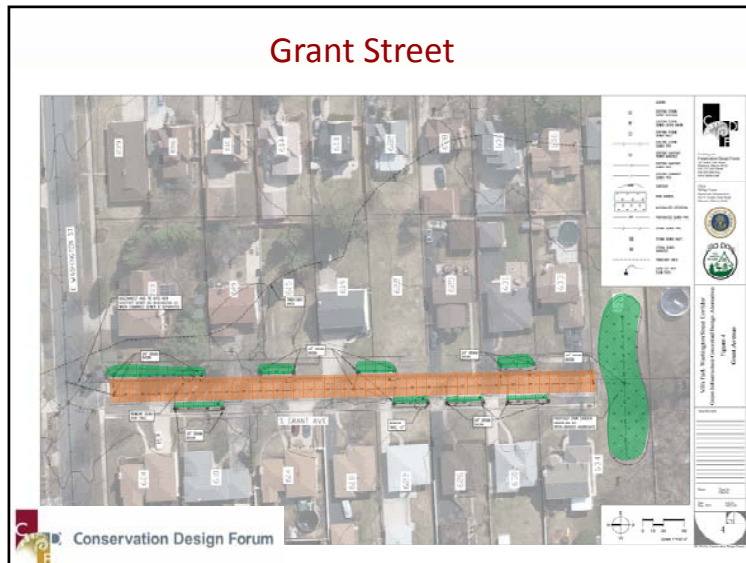
### Washington and Euclid

- Tributary area to project location: 9 acres
- Design features: Naturalized detention with 0.69 ac-ft of storage
- Additional benefits: Disconnection of runoff from combined sewer; reduces structural flooding while improving downstream water quality
- Level of treatment/protection: Project provides 10-year protection for adjacent structures

Conservation Design Forum  
630.559.2000  
[www.cdfinc.com](http://www.cdfinc.com)

Salt Creek Stakeholders Luncheon



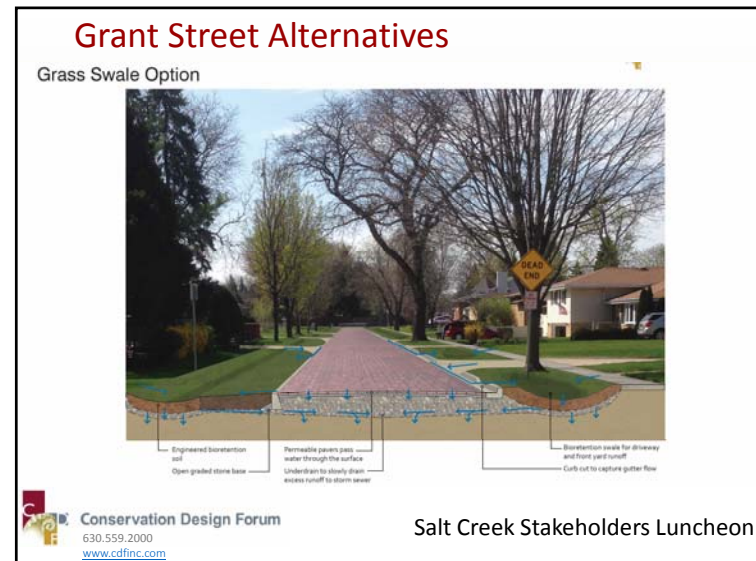


### Grant Street

- Tributary area to project location: 7 acres
- Design features: Permeable pavement with integrated bioretention and native plantings
- Additional benefits: Disconnection of runoff from combined sewer; reduces flooding issues while improving downstream water quality
- Level of treatment/protection: Project capable of treating a 2.5-inch rainfall prior to surface water discharge to storm system

Conservation Design Forum  
630.559.2000  
[www.cdfinc.com](http://www.cdfinc.com)

Salt Creek Stakeholders Luncheon



### Grant Street Alternatives

Perennial Grasses Option

Conservation Design Forum  
630.559.2000  
[www.cdfinc.com](http://www.cdfinc.com)

Salt Creek Stakeholders Luncheon

### Grant Street Alternatives

Flowering Perennials Option

Conservation Design Forum  
630.559.2000  
[www.cdfinc.com](http://www.cdfinc.com)

Salt Creek Stakeholders Luncheon

### Carol Stream Recreation Center

Conservation Design Forum  
630.559.2000  
[www.cdfinc.com](http://www.cdfinc.com)

Salt Creek Stakeholders Luncheon

### Josey Heights, Milwaukee, WI

Conservation Design Forum  
630.559.2000  
[www.cdfinc.com](http://www.cdfinc.com)

Salt Creek Stakeholders Luncheon





Conservation Design Forum  
630.559.2000  
[www.cdfinc.com](http://www.cdfinc.com)

Salt Creek Stakeholders Luncheon



Conservation Design Forum  
630.559.2000  
[www.cdfinc.com](http://www.cdfinc.com)

Salt Creek Stakeholders Luncheon



Conservation Design Forum  
630.559.2000  
[www.cdfinc.com](http://www.cdfinc.com)

Salt Creek Stakeholders Luncheon