



APPENDIX

Village of Villa Park, Illinois

May 1, 2017–April 30, 2018

Adopted April 24, 2017

APPENDIX

The Appendix is intended to present additional information, statistical data and a glossary that is useful in understanding the overall budget document.

Appendix A	Financial Management Policies
Appendix B	Authorized Full Time Positions by Department
Appendix C	Miscellaneous Statistics
Appendix D	Glossary
Appendix E	Economic Incentive Agreements

APPENDIX A – FINANCIAL MANAGEMENT POLICIES

1. **Balanced Budget Policy**

The Village shall submit a balanced budget where current revenues are equal to or greater than current expenditures. The FY 2017-18 budget is balanced by staying within the guidelines established by the Village Board.

2. **Revenue Policy**

The Village revenue base should be maintained so as to shelter it from short-run fluctuations in any one revenue source. Additional major revenue sources should be obtained as a way of ensuring a balanced budget. The Village will establish all user charges and fees at a level related to the full cost of providing the service.

3. **Investment Policy**

The Village of Villa Park's investment policy is to minimize credit and market risks while maintaining a competitive yield on its portfolio. Accordingly, deposits are either insured by federal depository insurance or collateralized. All collateral on deposits are held either by the Village, its agent or a financial institution's trust department in the Village's name.

4. **Debt Policy**

At April 30, 2016, Villa Park had a number of debt issues outstanding. As a non home rule community, general obligation bonds, except limited bonds, go to referendum for voter approval. The Village follows the State Statutes for non home governments when dealing with debt. This means that there is a legal debt limit in the Village of Villa Park that must be adhered to when issuing debt. Under current state statute, the Village's general obligation bonded debt issuances are subject to a legal limitation of 8.25% of the assessed value (\$508,616,735 for tax year 2015) of total assessed value of real personal property for a maximum \$41,960,880. As of April 30, 2016 the Village's total bonded debt of \$30,445,000.

5. **Operating Funds Reserve Policy**

The Village wishes to increase the operating fund balance to at least 90 days of general fund expenditures in the coming years. The projected fund balance available at April 30, 2016 will be approximately 156 days of general fund expenditures. The projected fund balance at April 30, 2017 is approximately 148 days.

APPENDIX A – FINANCIAL MANAGEMENT POLICIES

VILLAGE OF VILLA PARK, ILLINOIS

FY 2017-2018

6. Accounting, Auditing and Financial Reporting Policy

The Village shall have an independent audit performed annually. This audit will produce annual financial reports in accordance with Generally Accepted Accounting Principles (GAAP) as promulgated by the Governmental Accounting Standards Board.

7. Capital Replacement Policy

The Village must provide a framework for the addition and replacement of capital assets. This includes the maintenance of streets and roads, water and sewer lines, additions to the physical plant, vehicles and major construction projects. The Village must anticipate the need for these capital improvements in order to formulate a comprehensive plan for efficiently acquiring and maintaining these assets without a decrease in the quality of the services provided to the residents. To assist with this policy, an Equipment Replacement Account has been created to fund future vehicle and equipment replacement needs.

APPENDIX B – AUTHORIZED FULL TIME EMPLOYEES BY DEPARTMENT

VILLAGE OF VILLA PARK, ILLINOIS

FY 2017-2018

FY 2014-2015 to FY 2017-2018

	APPROVED FY 14-15	APPROVED FY 15-16	APPROVED FY 16-17	APPROVED FY 17-18
VILLAGE MANAGER				
Village Manager	1	1	1	1
Executive Assistant	1	1	1	1
Information Technology Manager	1	1	1	1
Total	3	3	3	3
FINANCE DEPARTMENT				
Finance Director	1	1	1	1
Risk Manager	1	1	1	1
Business Office Manager	1	1	1	1
Accountant	1	2	2	1
Accounting Clerk	1	1	1	1
Receptionist/Cashier	1	1	1	1
Utility Billing Clerk	1	1	1	1
Secretary	0	0	0	0
Total	7	8	8	7
ECONOMIC AND COMMUNITY DEVELOPMENT				
Economic Development Director	1	1	1	1
Community Development Director	1	1	1	1
Assistant Director	0	0	0	0
Building & Zoning Inspector	1	1	1	1
Property Maint. & Housing Inspector	1	1	1	1
Building/Property Inspector	1	1	1	1
Secretary	1	1	1	1
Total	6	6	6	6
POLICE DEPARTMENT				
Police Chief	1	1	1	1
Chief Secretary	1	1	1	1
Deputy Chief	2	2	2	2
Lieutenant	2	2	2	1
Police Sergeant	5	5	5	6
Police Detective				
Patrolman	27	27	27	27
Community Service Officer	4	4	3	3
Detective Secretary	1	1	1	1
Clerk Typist	6	6	5	5
Total	49	49	47	47

APPENDIX B – AUTHORIZED FULL TIME EMPLOYEES BY DEPARTMENT

VILLAGE OF VILLA PARK, ILLINOIS

FY 2017-2018

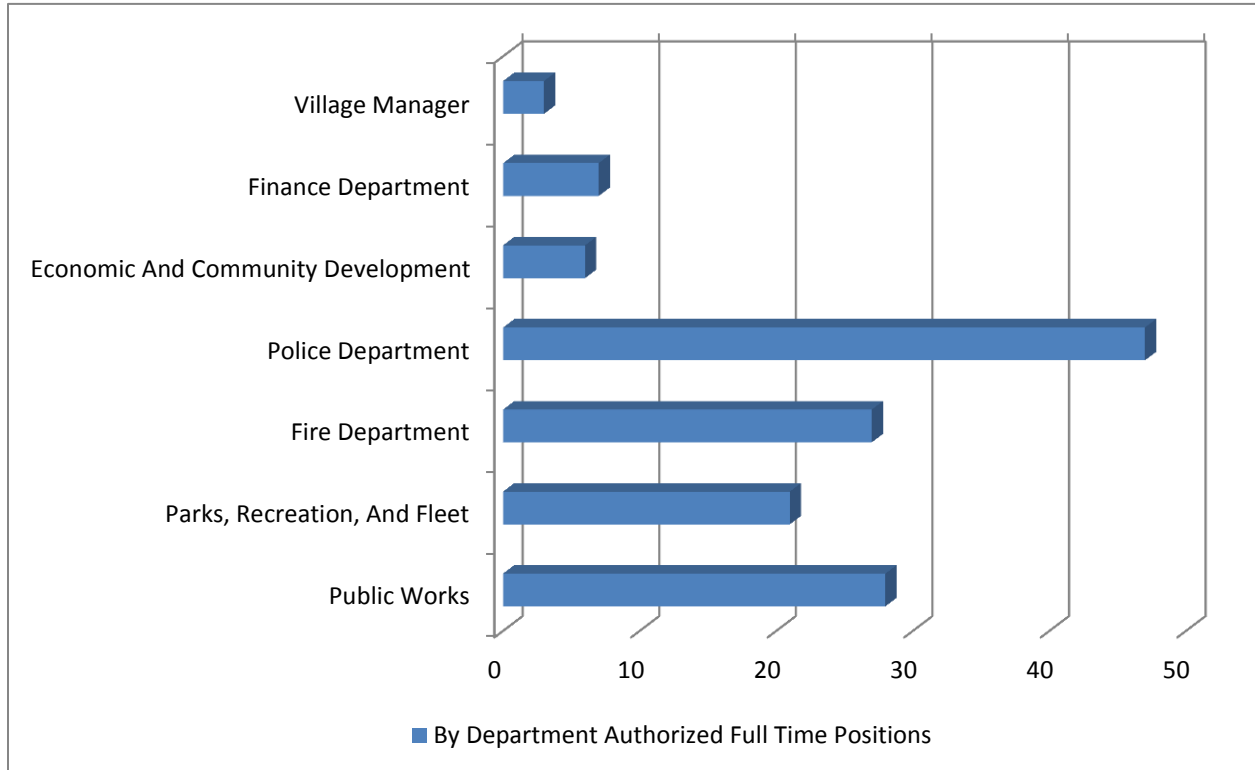
FY 2014-2015 to FY 2017-2018

	APPROVED FY 14-15	APPROVED FY 15-16	APPROVED FY 16-17	APPROVED FY 17-18
FIRE DEPARTMENT				
Fire Chief	1	1	1	1
Deputy Fire Chief	1	1	1	1
Fire Lieutenant	6	6	6	6
Firefighter/Paramedic	18	18	18	18
Fire / Building Inspector	1	0	0	0
Secretary	1	1	1	1
Total	28	27	27	27
PARKS, RECREATION, AND FLEET				
Parks & Recreation Director	1	1	1	1
Superintendent - Recreation	0	1	1	1
Superintendent - Parks	0	0	0	0
Program Supervisor	4	3	3	3
Administrative Secretary	0	0	0	0
Secretary	2	2	2	2
Foreman	2	2	2	2
Maintenance Worker	3	3	5	6
Mechanic	3	3	5	4
Custodian	3	3	2	2
Total	18	18	21	21
PUBLIC WORKS				
Public Works Director	1	1	1	1
Deputy Director of Public Works	0	1	1	1
Administrative Secretary	1	1	1	1
Receptionist Clerk / Technical Permitting	2	2	2	2
Superintendent	2	0	0	0
Foremen	1	2	2	2
Assistant Village Engineer	0	1	1	1
Civil Engineer II	1	2	2	2
Engineering Assistant (Senior)	1	0	0	0
Specialist Lead/MIS	5	5	5	3
Plumbing Inspector	1	1	1	1
Maintenance Worker	13	13	13	14
Total	28	29	29	28
TOTAL FULL TIME POSITIONS				
	139	140	141	139

APPENDIX B – AUTHORIZED FULL TIME EMPLOYEES BY DEPARTMENT

VILLAGE OF VILLA PARK, ILLINOIS

FY 2017-2018



APPENDIX C – MISCELLANEOUS STATISTICS

VILLAGE OF VILLA PARK, ILLINOIS

FY 2017-2018

Date of Incorporation	May 15, 1915
Form of Government	Board-Manager
Geographic Location	Western Suburb of Chicago located in DuPage County
Area	4.6 sq. miles
Population	
1914	300
1930	6,220
1950	8,807
1960	20,358
1970	25,891
1980	23,163
1990	22,253
1992	22,279
2000	22,075
2010	22,517
2011	21,904
2012	21,904
2013	21,904
2014	21,904
2015	21,904
2016	21,904

Municipal Services & Facilities

Number of Full-time Employees	139
Miles of Streets/Alleys	140
Miles of Sanitary Sewers	82
Miles of Storm Sewers	74
Building Inspection	
Number of Permits Issued in Calendar Year 2016	1,795
Value of Construction Authorized in Calendar Year 2016	\$18,424,690
Value of Permit Fees Collected in Calendar Year 2016	\$499,162
Fire Protection	
Number of Full-time Firefighters	26
Number of Stations	2
Number of Fire Hydrants	1,030
I.S.O. Rating	Class 3
Police Protection	
Number of Police	37
Number of Crossing Guards	4
Number of Squad Cars	15

APPENDIX C – MISCELLANEOUS STATISTICS

VILLAGE OF VILLA PARK, ILLINOIS

FY 2017-2018

Library Services	
Number of Libraries	1
Number of Books	101,855
Number of Registered Borrowers	9,713
2016-17 Total Circulation	298,543
Bookmobiles	0
Number of Audio Visual Items	14,645
Number of E-Titles	585,635
Recreation Facilities (Owned or leased)	
Number of Parks and Playgrounds	18
Park Area in Acres	129
Municipal Water Utility	
Population Served	22,093
Rated Daily Pumping Capacity	5,800,000
Average Daily Pumpage	1,602,000
Miles of Water Mains	80.4
Number of Metered Accounts	7,297
Elections	
Number of Registered Voters in Last Municipal Election	14,273
Number of Ballots Cast in Last Municipal Election	3,491
Percentage of Registered Voters Voting in Last Municipal Election	24.46%

APPENDIX C – MISCELLANEOUS STATISTICS

VILLAGE OF VILLA PARK, ILLINOIS

FY 2017-2018

**Village of Villa Park
Historical Rates charged to Water, Sewer and Garbage customers (resident rates)
Past 9 Years**

Water consumption rate			Sewer consumption rate			Garbage rate changes, per month		
Date of Change	Rate per 1,000 Gal.	% Change	Date of Change	Rate per 1,000 Gal.	% Change	Date of Change	Rate per Month	% Change
5/1/2009	\$ 5.50	6.10%	5/1/2007	\$ 1.55	2.70%	7/1/2009	\$ 17.70	3.50%
5/1/2010	\$ 5.95	8.10%	5/1/2008	\$ 2.31	9.00%	7/1/2010	\$ 16.77	-5.50%
5/25/2011	\$ 6.20	4.20%	5/1/2009	\$ 2.56	10.80%	7/1/2011	\$ 17.30	3.20%
1/1/2012	\$ 6.97	2.40%	5/1/2010	\$ 2.81	9.80%	7/1/2012	\$ 17.85	3.20%
2/1/2013	\$ 7.63	9.50%	9/1/2013	\$ 3.15	12.00%	11/1/2013	\$ 18.55	3.90%
1/1/2014	\$ 7.92	3.80%	1/1/2014	\$ 3.25	3.20%	7/1/2014	\$ 19.21	3.60%
1/1/2015	\$ 8.22	3.80%	1/1/2015	\$ 3.35	3.10%	7/1/2015	\$ 19.90	3.60%
1/1/2016	\$ 8.53	3.80%	1/1/2016	\$ 3.46	3.30%	7/1/2016	\$ 20.62	3.60%
1/1/2017	\$ 8.85	3.75%	1/1/2017	\$ 3.57	3.20%	7/1/2017	\$ 21.36	3.60%

APPENDIX D – BUDGET GLOSSARY

VILLAGE OF VILLA PARK, ILLINOIS

FY 2017-2018

The Budget contains specialized and technical terminology that is unique to governmental finance and budgeting. To assist the reader of the Budget document in understanding these terms, the following budget glossary has been prepared:

Abatement

A complete or partial cancellation of a levy imposed by a government. Abatements usually apply to tax levies, special assessments and service charges.

Acronyms:

CATS – Chicago Area Transportation Study

CMAQ – Congestion, Mitigation and Air Quality

IDOT – Illinois Department of Transportation

IGA – Intergovernmental Agreement

IMRF – Illinois Municipal Retirement Fund

L.U.S.T. – Liquid Underground Storage Tank

OSLAD – Open Space Lands Acquisition and Development

P.E.G. – Public, Educational, & Governmental access fees

SASED – The School Association for Special Education in DuPage County

S.C.S.D. – Salt Creek Sanitary District

STP – Surface Transportation

Accountability

The state of being obliged to explain one's actions, to justify what one does. Accountability requires governments to answer to the citizenry-to justify the raising of public resources and the purposes for which they are used.

Accounting System

The methods and records established to identify, assemble, analyze, classify, record and report a government's transactions and to maintain accountability for the related assets and liabilities.

Accrual Basis

A basis of accounting in which transactions are recognized at the time they are incurred, as opposed to when cash is received or spent.

Activity

A specific and distinguishable service performed by one or more organizational components of a government to accomplish a function for which the government is responsible (e.g., police is an activity within the public safety function).

Ad Valorem Tax

A tax based on value (e.g., a property tax).

Agency Fund

A fund normally used to account for assets held by a government as an agent for individuals, private organizations or other governments and/or other funds. The agency fund also is used to report the assets and liabilities of Internal Revenue Code, Section 457, deferred compensation plans.

Annual Operating Budget

The portion of the budget that pertains to daily operations that provide basic governmental services. The operating budget contains appropriations for such expenditures as personnel, supplies, utilities, materials, travel and fuel.

Asset

A probable future economic benefit obtained or controlled by a particular entity as a result of past transactions or events.

Appropriation

A legal authorization granted by a legislative body to make expenditures and to incur obligations for specific purposes. An appropriation usually is limited in amount and time it may be expended.

Appropriation Ordinance

An ordinance through which appropriations are given legal effect.

Assessed Valuation

A valuation set upon real estate or other property by a government as a basis for levying taxes.

Audit

A systematic collection of the sufficient, competent evidential matter needed to attest to the fairness of management's assertions in the financial statements or to evaluate whether management has efficiently and effectively carried out its responsibilities.

Basis of Accounting

A term used to refer to when revenues, expenditures, expenses, and transfers-and the related assets and liabilities-are recognized in the accounts and reported in the financial statements. Specifically, it relates to the timing of the measurements made, regardless of the nature of the measurement, on either the cash or the accrual method.

Bond

Most often, a written promise to pay a specified sum of money (called the face value or principal amount), at a specified date or dates in the future, called the maturity date(s), together with periodic interest at a specified rate.

Budget

A plan of financial operation embodying an estimate of proposed expenditures for a given period and the proposed means of financing them. Used without any modifier, the term usually indicates a financial plan for a single fiscal year.

Budget Awards Program

A voluntary program administered by the GFOA to encourage governments to publish budgets that reflect the commitment to meeting the highest principles of governmental budgeting.

Budget Officer System

A system adopted by the State of Illinois in 1969 in an effort to improve financial reporting of municipalities.

Budgetary Control

The control or management of a government or enterprise in accordance with an approved budget to keep expenditures within the limitations of available appropriations and available revenues.

Budget Message

A generally discussion of the proposed budget as presented in writing by the budget-making authority to the legislative body.

Capital Budget

A plan of proposed capital outlays and the means of financing them.

Capital Expenditures

Expenditures over \$10,000 that result in the acquisition of or addition to the government's general fixed assets.

Capital Improvement Program

A plan for capital expenditures to be incurred each year over a fixed period of years to meet capital needs arising from the long-term work program or other capital needs.

Capital Projects Fund

A fund created to account for financial resources to be used for the acquisition or construction of major capital facilities (other than those financed by proprietary funds and trust funds).

Certificate Of Achievement For Excellence In Financial Reporting Program

A voluntary program administered by the GFOA to encourage governments to publish efficiently organized and easily readable CAFRs/CUFRs and to provide technical assistance and peer recognition to the finance officers preparing them.

Commodities

Items used in the day to day operations of the department or division such as office supplies, photo supplies and tools. Commodities are expected to be used up during normal Village operations.

Consumer Price Index (CPI)

A statistical description of price levels provided by the U.S. Department of Labor. The index is used as a measure of the increase in the cost of living.

Contractual Services

Services rendered to Village departments and agencies by private firms, individuals or other government agencies. Examples include utilities, insurance, and professional services.

Corporate Fund

The fund used to account for all financial resources, except those required to be accounted for in another fund.

Debt Limit

The maximum amount of outstanding gross or net debt legally permitted.

Debt Service

The Village's obligation to pay the principal and interest of bonds and other debt instruments according to a predetermined payment schedule.

Debt Service Fund

A fund or funds established to account for the accumulation of resources for, and the payment of, general long-term debt principal and interest.

Deficit

(1) The excess of the liabilities of a fund over its asset. (2) The excess of expenditures over revenues during an accounting period or, in the case of proprietary funds, the excess of expenses over revenues during an accounting period.

Department

A major administrative division of the Village which indicates overall management responsibility for an operation or group of related operations within a functional area.

Depreciation

The portion of the cost of a fixed-asset charged as an expense prorated over the estimated service life of such an asset.

Division

A segment of a department which is assigned a specific operation.

Enterprise Fund

A set of self-balancing accounts used to account for activities similar to those found in the private sector, where the determination of net income is necessary or useful to sound financial administration. The Water, Wastewater and Parking Funds are enterprise funds.

Equalized Assessed Valuation

The assessed valuation of a property increased by a multiplier established by the Illinois Department of Revenue which is intended to increase the total assessed valuation of all property in the County to a level that is equal to 33-1/3% of market value.

Expenditure

This term refers to the amount of funds paid or to be paid for obtaining an asset, goods, and services. For budget purposes, the term expenditure applies to all costs or expected commitments.

Equity Accounts

Those accounts presenting the difference between assets and liabilities of the fund.

Expense

The term expense is used in full accrual accounting to report decreases in net total assets.

Fiscal Year (FY)

The time period designated by the Village signifying the beginning and ending period for recording financial transactions. The Village of Villa Park has specified May 1 to April 30 as its fiscal year.

Fixed Assets

Assets of long-term character which are intended to continue to be held or used, such as land, buildings, machinery, furniture and other equipment.

Formal Budgeting Integration

The management control technique through which the annual operating budget is recorded in the general ledger through the use of budgetary accounts. It is intended to facilitate control over revenues and expenditures during the year.

Fund

An accounting entity with a set of self-balancing accounts that is used to account for financial transactions for specific activities or government functions. Seven commonly used funds in governmental accounting are: the general fund, special revenue funds, debt service funds, capital project funds, enterprise funds, internal service funds and trust and agency funds.

Fund Balance

Fund balance is the excess of assets over liabilities. The unreserved fund balance is the amount available for appropriation.

General Fund

The fund used to account for all financial resources, except those required to be accounted for in another fund.

General Obligation Bonds

Bonds that finance a variety of public projects such as streets, buildings and improvements, and which are backed by the full faith and credit of the issuing government.

Grants

Contributions or gifts of cash or other assets from another government to be used or expended for a specified purpose, activity or facility.

Interfund Transfers

The movement of monies between funds of the same governmental entity.

Intergovernmental Revenues

Revenues from other governments in the form of grants, entitlement, shared revenues or payments in lieu of taxes.

Levy

To impose taxes, special assessments or service charges for the support of government activities. The total amount of taxes, special assessments or service charges imposed by a government.

Liabilities

Probable future sacrifices of economic benefits, arising from present obligations of a particular entity to transfer assets or provide services to other entities in the future as a result of past transactions or events.

Line-Item Budget

A budget that lists each expenditure category (salaries, office supplies, telephone service, copy machine costs, etc.) separately, along with the dollar amount budgeted for each specified category.

Long-Term Debt

Debt with a maturity of more than one year after the date of issuance.

Measurement Focus

The accounting convention that determines (1) which assets and which liabilities are included on a government's balance sheet and where they are reported there, and (2) whether an operating statement presents information on the flow of financial resources (revenues and expenditures) or information on the flow of economic resources (revenues and expenses).

Modified Accrual Accounting

Under the modified accrual basis of accounting, revenues are recognized when susceptible to accrual (i.e. when they become both measurable and available). Expenditures are recorded when the related fund liability is incurred).

Non Capital Expenditure

An expenditure that would normally be classified as a capital expenditure, but under the capitalization threshold of \$10,000.

Object

As used in expenditure classification, applies to the article purchased or the service obtained, rather than to the purpose for which the article or service was purchased or obtained (e.g., personal services contractual services, materials and supplies)

Operating Transfers

All interfund transfers other than residual equity transfers (e.g. legally authorized transfers from a fund receiving revenue to the fund through which the resources are to be expended).

Ordinance

A formal legislative enactment by the governing body of a municipality. If it is not in conflict with any higher form of law, such as a state statute or constitutional provision, it has the full force and effect of law within the boundaries of the municipality to which it applies. The difference between an ordinance and a resolution is that the latter requires less legal formality and has a lower legal status. Ordinarily, the statutes or charter will specify or imply those legislative actions that must be by ordinance and those that may be by resolution. Revenue raising measures, such as the imposition of taxes, special assessments and service charges, universally require ordinances.

Per Capita Debt

The amount of a government's debt divided by its population. Per capita debt is used to indicate the government's credit position by reference to the proportionate debt borne per resident.

Reserve

An account used either to set aside budgeted revenues that are not required for expenditure in the current budget year or to earmark revenues for a specific future propose.

Retained Earnings

An equity account reflecting the accumulated earnings of an enterprise or internal service fund.

Revenue

Monies that the Village receives as income. It includes such items as tax payments, fees from services, receipts from other governments, fines, reimbursements, grants, shared revenues and interest income.

Special Assessments

A compulsory levy made against certain properties to defray all or part of the cost of a specific capital improvement or service deemed to benefit primarily those properties.

Special Service Area

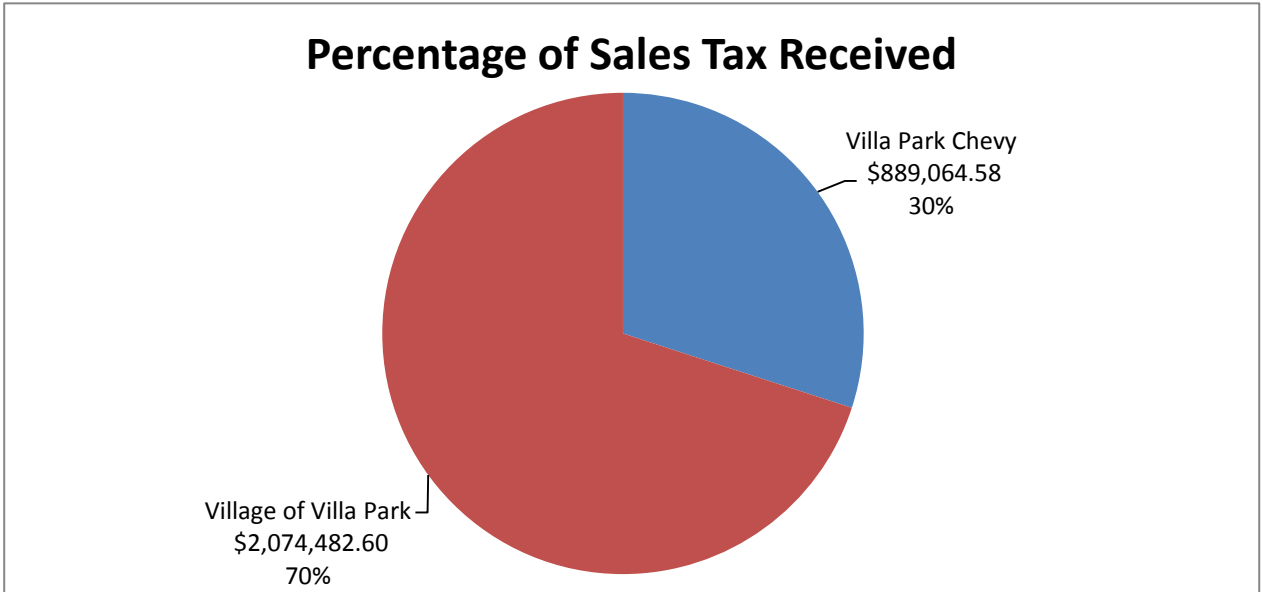
A financing technique used to finance special services and special improvements desired by a specific area of the Village. A tax is levied only on the particular area that will receive the special service or improvement.

Tax Rate

The amount of tax levied for each \$100 of assessed valuation.

Villa Park Chevy Tax Incentive Agreement Details
(30% of the Sales Tax Revenues)

Annual Period	Dates of Annual Period	Total Sales Tax	Amount Paid to Villa Park Chevy	Amount Kept by the Village of Villa Park
1	2/2004 - 1/2005	\$ 117,076.83	\$ 35,123.05	\$ 81,953.78
2	2/2005 - 12/2005	\$ 174,495.65	\$ 52,348.70	\$ 122,146.96
3	1/2006 - 12/2006	\$ 132,399.85	\$ 39,719.96	\$ 92,678.50
4	1/2007 - 12/2007	\$ 137,102.69	\$ 41,130.81	\$ 95,971.88
5	1/2008 - 12/2008	\$ 151,712.28	\$ 45,513.68	\$ 106,198.60
6	1/2009 - 12/2009	\$ 242,278.24	\$ 72,683.47	\$ 169,594.77
7	1/2010-12/2010	\$ 283,441.44	\$ 85,032.44	\$ 198,409.00
8	1/2011 - 12/2011	\$ 368,029.17	\$ 110,408.75	\$ 257,620.42
9	1/2013 - 3/2013	\$ 17,144.64	\$ 5,143.39	\$ 12,001.25
11	1/2014 - 12/2014	\$ 401,721.29	\$ 120,516.38	\$ 281,204.91
12	1/2015-12/2015	\$ 461,809.11	\$ 138,542.73	\$ 323,266.38
13	1/2016-12/2016	\$ 476,337.39	\$ 142,901.22	\$ 333,436.17
14	1/2017-12/2017			
15	1/2018-12/2018			
16	1/2019-12/2019			
17	1/2020-12/2020			
18	1/2021-12/2021			
19	1/2022-12/2022			
20	1/2023-12/2023			
		\$ 2,963,548.58	\$ 889,064.58	\$ 2,074,482.60



On February 14, 2011 the Village Board passed Ordinance # 3640 amending the original 2003 agreement. The ordinance allows for a ten-year extension of the agreement to conclude in 2023. There is a ceiling of \$1,500,000 on their rebate and the requirement for the owner to refund the entire sales tax rebate in the event that an auto dealership is not maintained at the site through 2023.

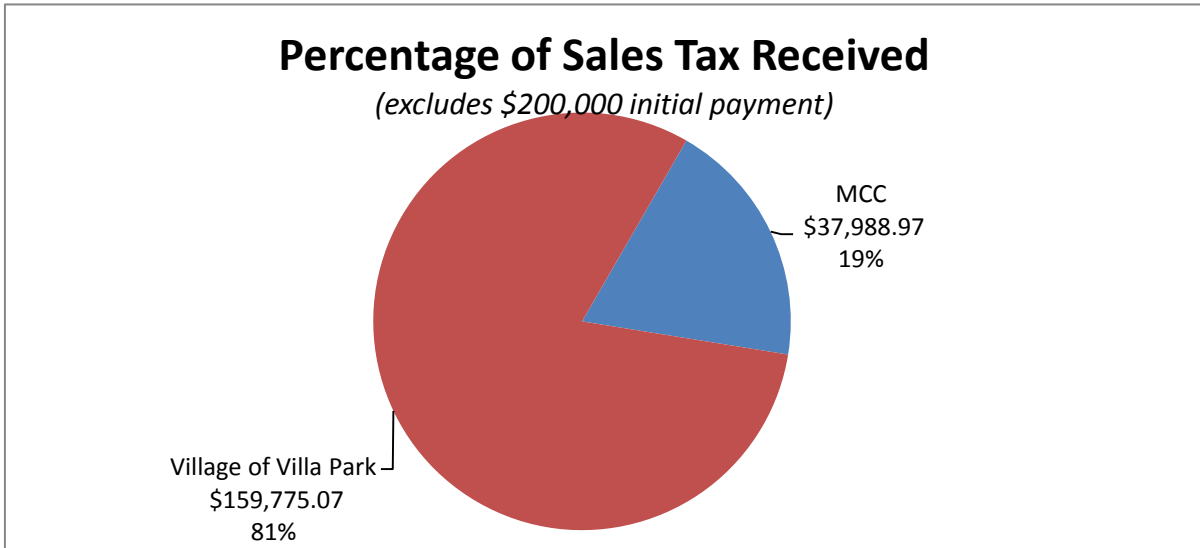
Motor Cycle Center (MCC)

Sales tax sharing agreement

\$200,000 initial payment, plus 90% of sales tax in excess of \$35,000,
up to a maximum aggregate payment of \$614,949 plus interest

Annual Period	From	To	Sales tax paid to MCC	Sales tax retained by Village of Villa Park	Total Sales Tax
<i>Initial Payment</i>			\$ 200,000.00		
1	August, 2012	December, 2012	\$ -	\$ 15,554.07	\$ 15,554.07
2	January, 2013	December, 2013	\$ 9,525.24	\$ 36,058.36	\$ 45,583.60
3	January, 2014	December, 2014	\$ 11,845.15	\$ 36,316.13	\$ 48,161.28
4	January, 2015	December, 2015	\$ 11,697.19	\$ 36,299.69	\$ 47,996.88
5	January, 2016	December, 2016	\$ 4,921.39	\$ 35,546.82	\$ 40,468.21
6					
7					
8					
9					
10					
			\$ 237,988.97	\$ 159,775.07	\$ 397,764.04

Maximum payment \$ 614,949.00



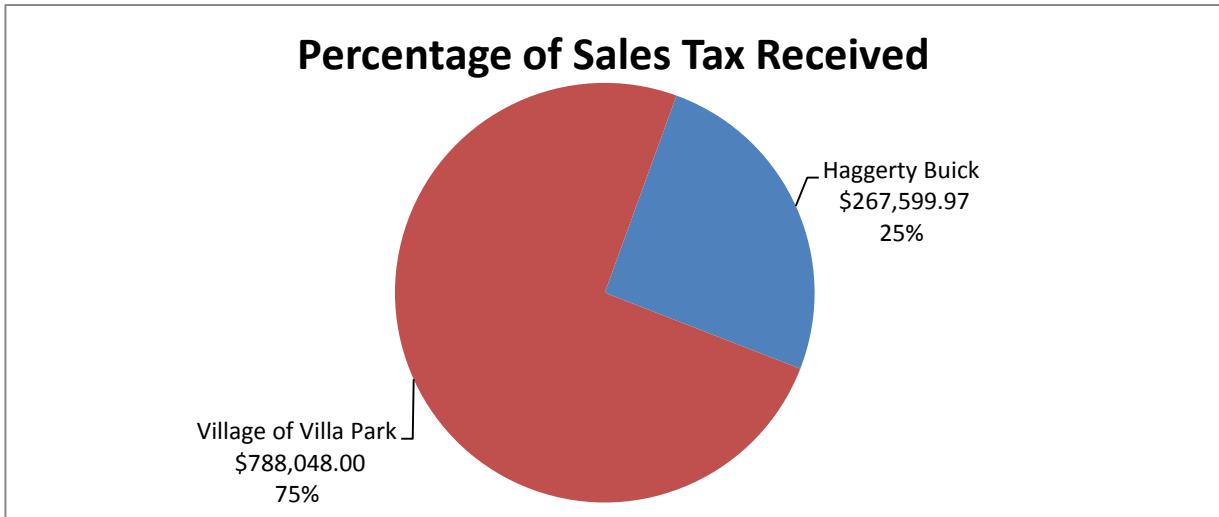
Haggerty Buick

Sales tax sharing agreement

Through 3-1-23, 80% of excess over \$180,287; then 70% of excess over \$180,287

Annual Period	From	To	Sales tax paid/due to Haggerty Buick	Sales tax retained by Village of Villa Park	Total Sales Taxes
1	March, 2013	February, 2014	\$ 42,389.62	\$ 190,884.41	\$ 233,274.03
2	March, 2014	February, 2015	\$ 79,247.65	\$ 200,098.91	\$ 279,346.56
3	March, 2015	February, 2016	\$ 99,648.10	\$ 205,199.03	304,847.13
4	March, 2016	February, 2017	\$ 46,314.60	\$ 191,865.65	238,180.25
5				SEE NOTE BELOW	
6					
7					
8					
9					
10					
			\$ 267,599.97	\$ 788,048.00	\$ 1,055,647.97

Note: Does not include January and February, 2017 sales information as the information is not yet available from the State. Because Haggerty has exceeded the annual threshold, they will receive 80% of sales taxes generated in those two months.



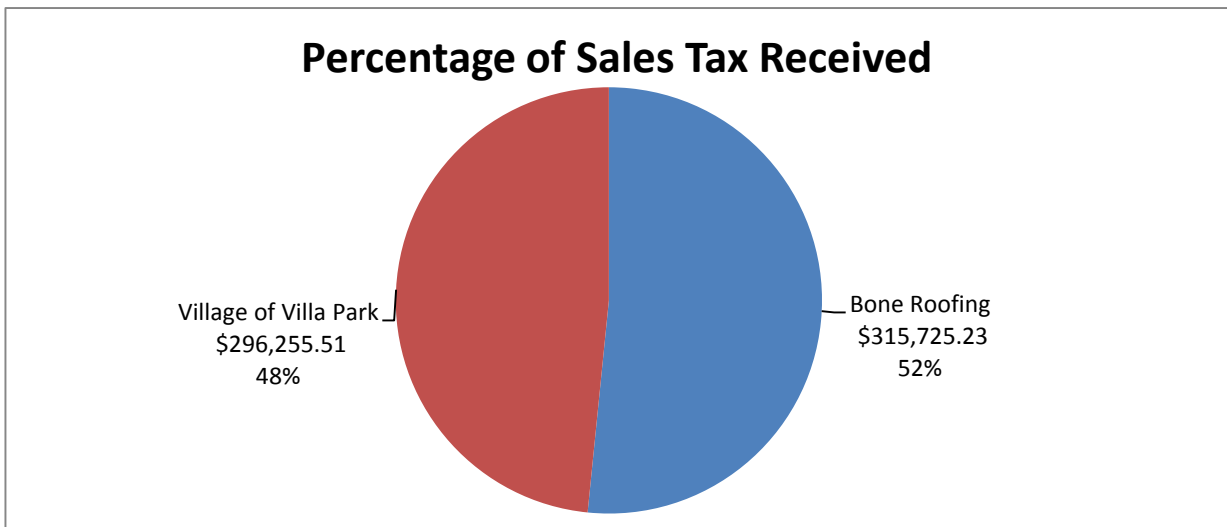
Bone Roofing

Sales tax sharing agreement

1st 12 months, 55% of sales tax to Bone Roofing; years 2-4 50%; then 35%, then 25%

Annual Period	From	To	Sales tax/due paid to Bone Roofing	Sales tax retained by Village of Villa Park	Total Sales Taxes
1	April, 2014	March, 2015	\$ 107,082.66	\$ 87,613.06	\$ 194,695.72
2	April, 2015	March, 2016	\$ 104,904.95	\$ 104,904.90	\$ 209,809.85
3	April, 2016	December, 2016*	\$ 103,737.62	\$ 103,737.55	\$ 207,475.17
4					
5					
6					
7					
8					
9					
10					
			\$ 315,725.23	\$ 296,255.51	\$ 611,980.74

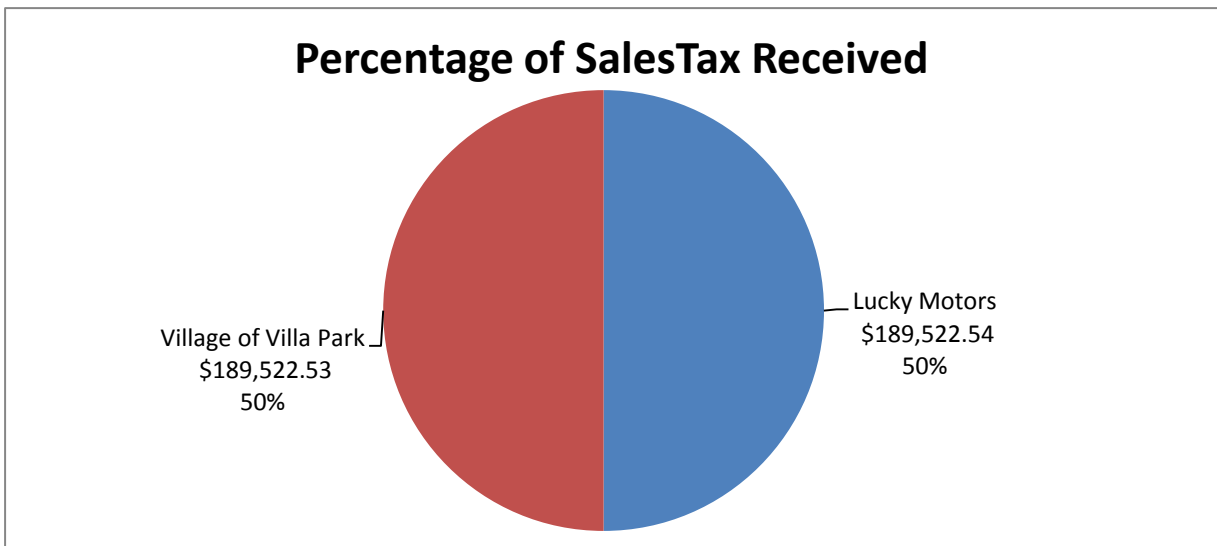
* 2017 data not available



Lucky Motors
 Sales tax sharing agreement
 50% tax rebate for 7 years, then 25% for years 8, 9 and 10

Annual Period	From	To	Sales tax paid (due) to Lucky Motors	Sales tax retained by Village of Villa Park	Total Sales Taxes
1	November, 2013	October, 2014	\$ 35,671.11	\$ 35,671.11	\$ 71,342.22
2	November, 2014	October, 2015	\$ 58,267.56	\$ 58,267.56	\$ 116,535.12
3	November, 2015	October, 2016	\$ 85,805.88	\$ 85,805.88	\$ 171,611.76
4	November, 2016	December, 2016*	\$ 9,777.99	\$ 9,777.98	\$ 19,555.97
5					
6					
7					
8					
9					
10					
			\$ 189,522.54	\$ 189,522.53	\$ 379,045.07

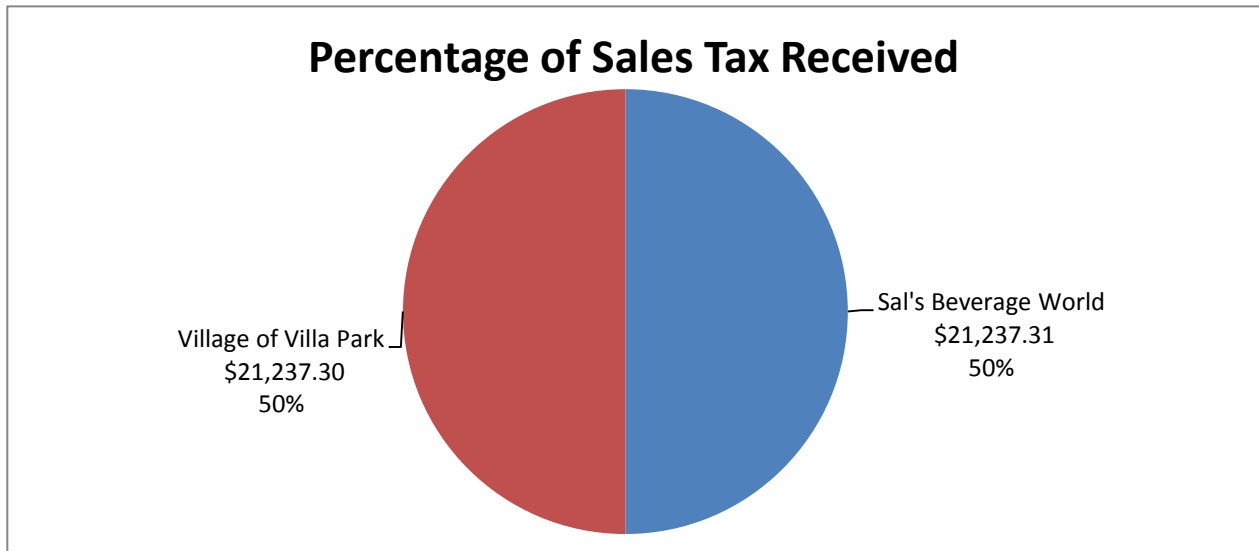
* 2017 data not available



Sal's Beverage World
 Sales tax sharing agreement
 50% tax rebate for 10 years, up to \$269,000

Annual Period	From	To	Sales tax paid (due) to Sal's Beverage World	Sales tax retained by Village of Villa Park	Total Sales Taxes
1	May, 2015	April, 2016	\$ 11,346.85	\$ 11,346.85	\$ 22,693.70
2	May, 2016	December, 2016*	\$ 9,890.46	\$ 9,890.45	\$ 19,780.91
3					
4					
5					
6					
7					
8					
9					
10					
			\$ 21,237.31	\$ 21,237.30	\$ 42,474.61

* 2017 data not available



Wildfire Harley-Davidson

Sales tax sharing agreement

100% of the 1% business district tax, plus 90% of sales taxes for sales in excess of \$10,250,000

Annual Period	From	To	Business District tax paid to Wildfire H-D	Sales tax paid to Wildfire H-D	Total paid to Wildfir H-D
1	October, 2014	June, 2015	\$ 13,732.99	\$ -	\$ 13,732.99
2	October, 2015	June, 2016	\$ 24,004.41	\$ -	\$ 24,004.41
3	October, 2016	June, 2017*	\$ 10,165.77	\$ -	\$ 10,165.77
4					
5					
6					
7					
8					
9					
10					
			\$ 47,903.17	\$ -	\$ 47,903.17

*2017 data not available